



Prospectus

Headteacher's Welcome

Welcome to Stanley Primary School where each child is valued as an individual and supported to achieve their maximum potential. Within our ['Stanley Values'](#) we support our children to develop key life skills such as confidence, responsibility and teamwork. Above all, we wish to instil a love of learning.

I am extremely proud to lead a team that is committed to our children's well-being, achieving high standards and providing the best opportunities for all in their care. Our staff, supported by our Governors, work hard to deliver a rich and challenging curriculum which prepares our children for their future education. We strive to help them acquire the skills and enthusiasm needed to embrace the opportunities, responsibilities and experiences of later life. Our school has a very warm, welcoming family ethos created by our caring, supportive and friendly environment.

It is our firmly held view that children will learn best when parents and school work closely together and we hope you will encourage your child to contribute to the life of the school and to take part and enjoy the many opportunities available.

We hope you find all the information you need about our school on the website, but please contact us if you need any further information.

Mrs Jane Murphy

Headteacher



Our Vision...



‘Learning together to create opportunities and experiences that enable our pupils to achieve their full potential’

Our Values...

Our children and staff are **'Proud to be Purple'** in our **'Stanley family'** as we focus on/being:

Sensible

Motivated

Aiming high

Resilient

Team players

Enthusiastic

Respectful

We aim to foster these values through **being 'SMARTER'** within our **'Stanley family'**.

These values are developed in Stanley Primary School through the broad and balanced curriculum we offer. Through each subject we aim for our pupils to be **engaged, inspired, and challenged**, with a clear focus on **enquiry-based learning** whilst **acquiring new language** to build **knowledge, skills and concepts**.

What did OfSTED say?

“The school strives to achieve its value of aiming high for pupils in all aspects of school life. This is reflected in the high ambition that the school has for pupils, including those with special educational needs and/or disabilities (SEND).”

“Pupils embrace the learning opportunities that the school provides for them. Many pupils leave the school well prepared for their next stage of education.”

“Pupils are keen to follow adult instructions and to live up to the high expectations of behaviour that the school has.”

“Pupils are kind, considerate and take pride in being part of the school community.”

“Pupils benefit from positive relationships with staff. They trust that staff will help them with any worries or concerns that they may have.”

“Pupils value the range of leadership opportunities that are available to them.”

“The curriculum is ambitious for pupils, including those with SEND. The school have put effective systems in place that identify the additional needs of pupils with SEND. Carefully considered support and resources ensure that pupils with SEND progress well through the school’s curriculum.”

Learning Together

OfSTED, November 2023

Facilities and Organisation of our school



Stanley Primary School caters for 630 children between the ages of 4 and 11 years. The school's current admission number is 90 children and each of the seven year groups are organised into three mixed ability classes.

The Infant Department of the school caters for children in Reception to Year two and the Junior Department for Year's three to six. Children's education is also split into three key stages: Foundation (Reception); Key Stage 1 (Years 1 and 2) and Key Stage 2 (Years 3 to 6).

The school is situated in extensive grounds which include three playgrounds, large fields, woodland areas and enclosed gardens. In addition, the Reception children have use of an outdoor area for continuous provision. The school has a MUGA (Multi Use Games Area) which is used for school activities (both during and after school).

We have two large school halls, one in key stage one and one in key stage two. These are used daily for PE, lessons and assemblies. At various intervals in your child's life at Stanley they will also be a part of a year group performance which is performed on the school hall stages.

Our own kitchen provides cooked healthy meals with a variety of choices, or children can choose to bring a packed lunch.

All classrooms are well equipped with visualisers and interactive boards and we have several mobile IT suites containing i-pads or chrome books.

We have two libraries offering an extensive choice of fiction and non-fiction books for children to borrow.

All teachers are entitled to Planning, Preparation and Assessment (PPA) time away from their class for one afternoon or morning a week. The school uses its own teachers to cover this time and in years 1 to 6 this will be provided by our own specialist teachers in music, PE and Spanish.



School Office

Our school office is located in the Junior Department which is on the corner of Wordsworth Avenue and Knutsford Road and is open from 8.30am to 4.30pm term time only. The office staff will be happy to help and can cater for absence reporting and general enquiries.



Pastoral Care

There is additional support in school for pupils whose learning/attendance is affected by social, emotional or behavioural difficulties. School may also be able to 'signpost' families to other agencies who can offer further help and advice.

Rewards and behaviour

All pupils are expected to co-operate fully with staff and observe behaviour guidelines. We employ a number of positive reward systems such as weekly "Superstar" awards for individuals and merit badges for Key Stage 2 pupils. To encourage teamwork pupils in key stage two are given house points for their work and house captains are appointed, along with prefects in key stage two. Our children strive to be 'Proud to be Purple' which is awarded in Year group assemblies on a weekly basis for upholding our Stanley Values.

From time to time, some behaviour does fall below that which is expected and school has a structured series of sanctions for this. As parent/carer(s) you will be kept fully informed and your support would be appreciated.



Curriculum

At Stanley Primary School we believe in making learning meaningful, challenging and memorable for our children. We aim to provide opportunities for children to develop as independent, confident, successful learners with high aspirations who know how to make a positive contribution to their community and the wider society.

Our curriculum is centred around the aims and values of our school and has been designed to respond to the particular needs of our community. Through considering the knowledge and skills to be taught, as well as the levels of ability of the children, our teachers create exciting, engaging and motivating learning journeys.

Our teaching units are carefully planned to ensure coverage and progression and enable our pupils to make connections and build on their prior knowledge and understanding within a context. Teaching through a context for learning encourages the planning of knowledge-rich experiences that inspire and bring joy to teaching and learning. We believe that children draw from these rich experiences and this is reflected in the quality of education provided by our school.

The school's focus on curriculum development has been carefully designed around our **5 key curriculum drivers:**

| Community | Opportunities | Challenge | Character | Communication and language- EYFS |
|--|--|---|---|---|
| helping our pupils to establish a sense of belonging and a respect of diversity, equality and British values within their local and the wider community. | which helps pupils become aspirational by providing opportunities and experiences so they know the possibilities available for their future lives. | to motivate and build resilience in our pupils encouraging them to think positively, take risks and aim to be the very best that they can be. | nurturing and educating our pupils to help them develop the characteristics needed to become successful learners, well-rounded individuals and responsible global citizens. | to help our pupils to communicate effectively with each other and express their ideas so that they become comfortable using a rich range of vocabulary and language structures. |

These are central to our school vision and ethos and underpin the learning and experiences that we undertake in all areas of school life to ensure our curriculum offer is enriched. They reflect and respond to the social and educational needs of our community.

Our curriculum goals are:

| Curriculum Goals | | |
|--|---|---|
| To provide a coherent, ambitious, well-sequenced, academic curriculum that leads to sustained mastery for all and a greater depth of understanding for those who are capable. | To provide a rich cultural capital that ‘provides the essential knowledge that pupils need to be educated citizens, introducing them to the best that has been thought and said, and helping to engender an appreciation of human creativity and achievement.’ | To give pupils appropriate experiences to develop as confident, resilient, responsible, active citizens. |

These are aligned directly with the Ofsted framework and provide our pupils with the core knowledge needed to be educated citizens. They ensure our curriculum embodies rigour and high standards and creates coherence within the essential knowledge taught in the key subject disciplines.

At Stanley we use the Early Learning Goals and the National Curriculum as milestones throughout school and each subject is broken down in to key threshold concepts which run through the curriculum. These are the ‘Big Ideas’ that shape our students thinking and allow them to explore, develop a sense of curiosity and take ownership of their learning. The same threshold concept is explored in every year group, in a range of different contexts, and our children gradually increase and deepen their understanding of them through repetition and continuous learning. We believe that in providing knowledge-rich, diverse, memorable experiences our children will learn and develop a range of transferable

skills, engender a sense of pride in positive characteristics and achievement, and develop a purpose and relevance for learning.

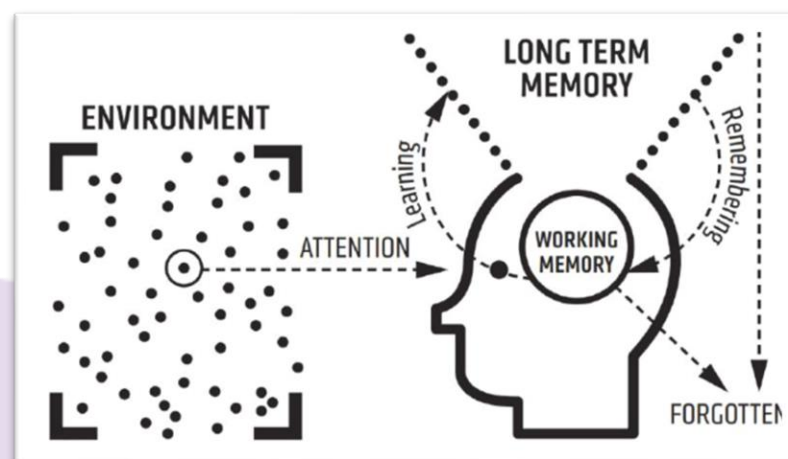
Stanley Primary School provides teaching of religious education for all children in accordance with the locally agreed syllabus, although parents/carers have the right to withdraw their child from this. In addition, we hold weekly assemblies to uphold our Stanley values and provide a daily act of collective worship.

Our curriculum and all subsequent learning is based on evidence from **cognitive science**. Researchers believe that spaced learning works because the time delay between study sessions forces the learner to work harder to retrieve the information and that this helps to consolidate information in long-term memory.

Delivery based on evidence from cognitive science

Learning is most effective with **spaced repetition**.

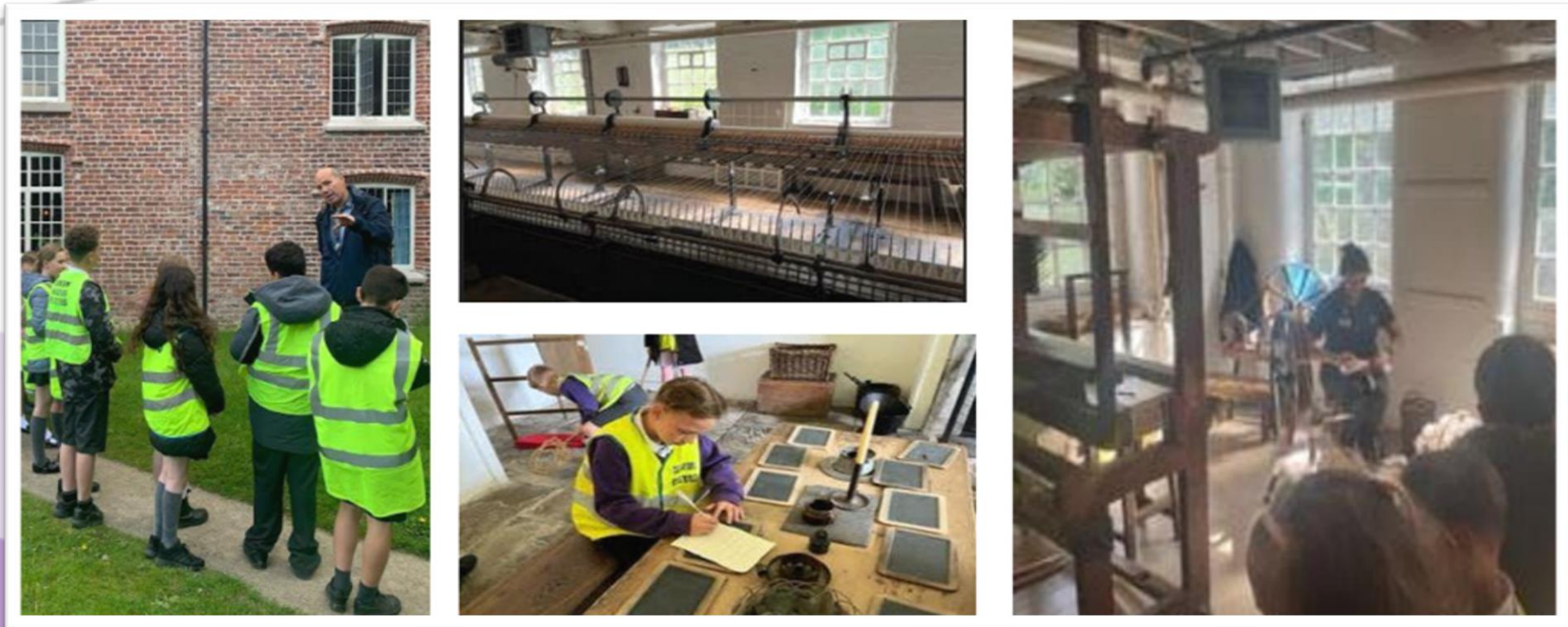
Retrieval of previously learned content is frequent and regular, which increases both storage and retrieval strength.



'The purpose of curriculum is to build the architecture of long-term memory.'

Dylan William

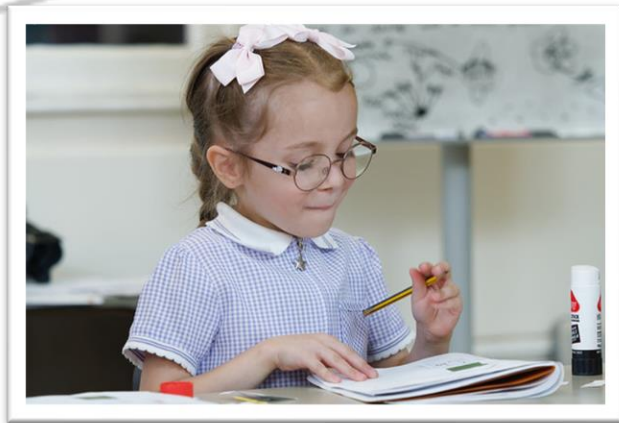
Our Stanley family work together to ensure that our key drivers are the golden thread that runs through all aspects of school life. Each member of our team shares the same vision and are committed to providing our pupils with the very best opportunities, creating the highest aspirations and motivating our children to be life-long learners.



Lessons and opportunities

We have an ambitious curriculum for all our pupils and we strive to achieve each child's potential in the broad range of subjects we offer. We teach the National Curriculum in all subjects and we have specialist teachers in Music, Physical education (PE) and Modern Foreign Language (MFL). We chose Spanish as our modern foreign language which is taught from Y3-Y6.

PSHCE and RSE are taught by our class teachers as stand-alone lessons, however themes are often explored across the curriculum in other subjects. Religious Education is based on the Lancashire Agreed Syllabus and each half term our pupils are presented with a reflective question to provoke thought and discussion about different religions.



Some children experience difficulties in accessing the curriculum and wherever necessary, additional support is provided. Some children will be identified as having Special Educational Needs (SEN) and in partnership with parents/carers, our Special Educational Needs and/or Disabilities Co-ordinator will work with you to support your child.

During assemblies, children learn about British values which supports our teaching of the values across the curriculum to support our moral, social, spiritual and cultural teaching. Children also enjoy celebrating each other's achievements in addition to welcoming visitors into school to enrich social and cultural experiences.

We offer many school visits throughout the school year and we enter many competitions both sport and curriculum based to enrich the curriculum and provide our children with experiences outside the classroom.



Admissions to our school

Children are admitted to Stanley Primary School from the beginning of the school year in which they become five years old. Admissions to school are in accordance with stated parental preference and using the admissions criteria set by Blackpool Borough Council. Please look out for open events advertised on social media and via the school website to come and visit.

Admissions are made via Blackpool Council [\(Click here\)](#)

Starting our school

Parents/carers of children who have received an offer of a place for their child at Stanley Primary School will receive lots of information about the induction process, including forms to fill-out detailing information all about your child. Parents/carers will be invited to attend a 'Welcome to Stanley Primary School' evening event in which you will be able to view the classroom and meet your child's teacher. Children will be invited to 'Stay and play' sessions, usually in July, prior to starting school in September.

In the first week of September children attend either a morning or afternoon session to support them to settle into school life and allow them to build relationships. In consultation with parents/carers, some children will remain part-time until they have settled into school life.



Non-routine admissions

Non-routine admissions (admissions that are mid-term or within a school year) are restricted to the beginning of a school term, except for instances where the family has moved to the immediate area from outside the area or for any compelling reason, which is deemed by the Headteacher to be acceptable. All non-routine admissions are allocated through Blackpool Council.

Children who join mid-term will be invited to come and look around school with their parent/carer(s). Parent/carer(s) will be given information about school and asked to complete a school admission form. Parent/carer(s) will be notified as soon as possible of the proposed class teacher and a start date will be agreed. This would normally be the first day of the school term. New children are always supported by friends in their new class and the adults in school to ensure they feel welcome and part of the Stanley family.



Before a child can start school we require a copy of their birth certificate (long version) to verify their date of birth and parental responsibility

A day at Stanley Primary School

Our doors open at 8:35am and children are able to come into school and enjoy a breakfast item if they wish (provided through the Blackpool Borough Council Breakfast scheme). Registers are taken at 8:45am prompt and the school day finishes at 3:15pm.

Extra-curricular clubs

We offer a wide variety of after school extra-curricular clubs around the school year – these run at lunchtime or after school. Clubs change throughout the year.

Multi-skills

Football

Drama

Choir

French

Taekwondo



School Meals

Our school meals are provided by Lancashire Catering who have several healthy and tasty options for pupils to choose from on a daily basis. Pupils in Reception-Year Two inclusive can have a school meal free of charge through the Universal free School Meals Scheme. Parent/carer(s) may be eligible to receive free school meals if they are in receipt of certain benefits. Find out [here](#).



School Uniform

In line with Department of Education guidelines, the majority of our uniform is generic and available to purchase from local supermarkets, as well as uniform shops. However, we do have branded items (sweatshirts, cardigans, PE t-shirts and ties) which are only available to purchase at local uniform

shops - First Class Kids on Highfield Road and Uniform and Leisurewear- the shops are in Kirkham and Garstang but online shopping is available.

What is our uniform?

- Purple school sweatshirt/cardigan (required branded item)
- White shirt/blouse/polo shirt
- School tie (optional)
- Grey or black trousers/shorts/skirt/pinafore
- Purple and white summer dress for summer term (optional)
- Sensible dark shoes or sandals. No trainers
- Coat or jacket suitable for all weather conditions



Reception children use the outdoor play area as part of their learning environment in all weathers. Some waterproof clothing can be provided but it is advisable to provide your child with wellington boots and appropriate outer wear.

PE Indoors:

- White T-shirt (Stanley logo optional)
- Blue or black shorts/skirt
- Black pumps

PE Outdoors:

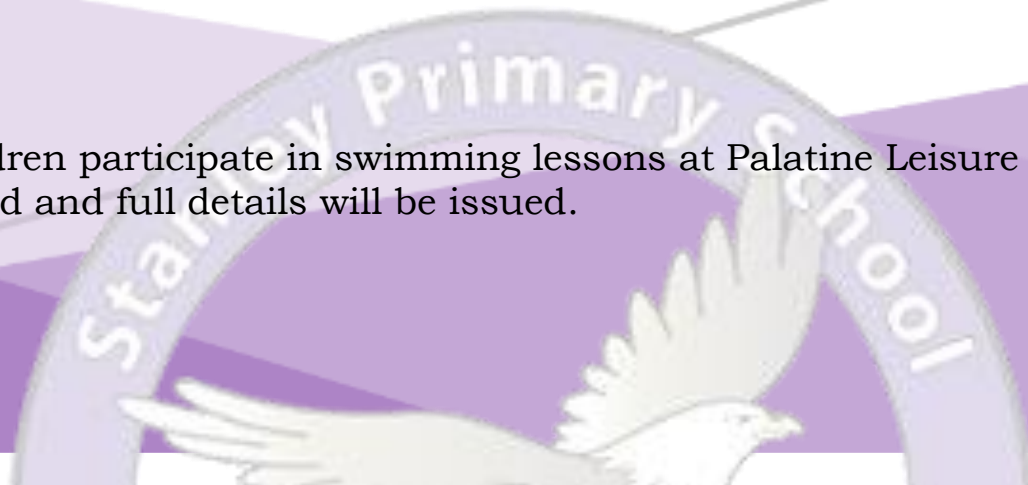
- Trainers
- Blue or black tracksuit for colder weather



We do have a small stock of pre-loved uniform (most items) which is available free of charge. If you would like to discuss this, please contact the Office.

Swimming:

In Years 3 and 4, children participate in swimming lessons at Palatine Leisure Centre. Swimming kit will need to be provided and full details will be issued.



Jewellery:

For safety reasons, jewellery should not be worn in school apart from stud earrings and watches. Stud earrings will need to be removed for PE lessons and swimming, and children should aim to be confident in doing this themselves. SMART watches that receive phone calls/messages/take photographs are not permitted in school for pupils.

Make Up/Hair:

Make up must not be worn to school and hair below the collar should be tied back. Dyed hair is not suitable for school and we ask that parents/carers refrain from allowing children to have extreme hairstyles.

Property:

Children are responsible for the security of their possessions. Please name all items of clothing. Children's personal property should not be brought into school. If you wish your Junior child to have a mobile phone for the journey to and from school we politely remind you that school cannot take responsibility for any losses. A lost property box is kept in school and unclaimed items cleared regularly.

Safeguarding



Stanley Primary School is committed to safeguarding and promoting the welfare of our children. We expect all our staff to share this commitment. Our safeguarding policy in school ensures that there are effective measures in place to safeguard all our children from the risk of potential harm.

All members of our school community:

- are aware of their responsibilities in relation to safeguarding and child protection
- know the procedures that should be followed if they have cause for concern
- know where to find additional information regarding safeguarding
- are aware of the key indicators relating to child abuse
- fully support the school's commitment to safeguarding and child protection.

Communication

You can find the latest news and information such as term dates, newsletters, school policies and much more information on our school website:

www.stanleyprimaryschool.com

It is really important that you keep us up to date with your contact information, as we may need to telephone, message or email you with important information.

Teachers are not able to meet with parent/carer(s) during the school day but do try to make themselves available at the beginning or end of the school day – however, many teachers are involved in extra-curricular clubs, attending courses or meetings, therefore it is essential that appointments are made by telephoning/emailing the school office (01253 761022 or admin@stanley.blackpool.sch.uk)

We have two parent/carer evenings within the school year where you can come and discuss your child's progress and a formal written report is sent home in July. We also offer an open classroom event early in the Autumn term so you can come and see your child's classroom.

Remember to follow us on our official Facebook and Instagram page too!

Any problems?

We encourage you to get in touch as soon as possible with us if you feel there is an issue/problem with your child in school – we will be happy to help. Your initial appointment should be made with the class teacher or Year Group Leader if appropriate, again by contacting the school office by telephone/email. If your problem can not be resolved an appointment can be made with our assistant Headteacher Mrs Jackson-Rudd in the first instance.

We look forward to welcoming you to Stanley Primary School



Telephone: 01253 761022

Email: admin@stanley.blackpool.sch.uk

Website: www.stanleyprimaryschool.com